

# HD512 LC-7



## DIGGING DEPTH

18'4"

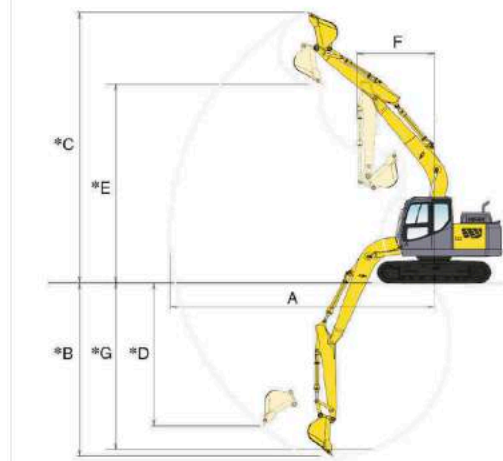
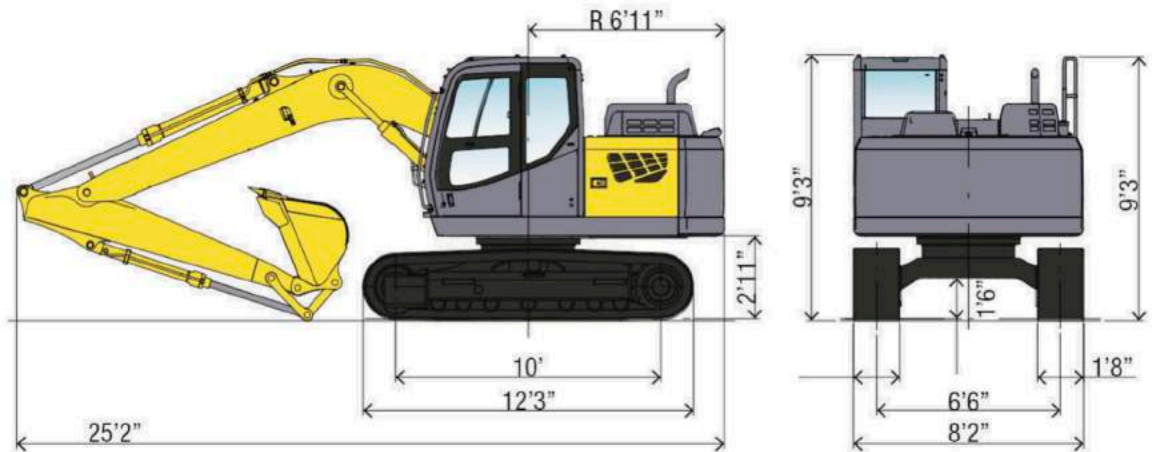
## OUTPUT RATING

105 HP

## OPERATING WEIGHT

28,429 LBS

# KATO



	512	Working Ranges	
		STD	Long Arm
A.	Max Digging Radius	27'3"	28'9"
B.	Max Digging Depth	18'4"	19'10"
C.	Max Digging Height	28'8"	29'9"
D.	Max Vertical Wall	15'2"	16'6"
E.	Max Dumping Height	21'	22'1"
F.	Max Swing Radius	7'11"	9'
G.	Max Digging Depth at 8' floor length	17'7"	19'4"



**HD 512**

<b>MODEL</b>	<b>HD512</b>
<b>ENGINE</b>	
Rated output	105 hp
Starter/Alternator	24 Volt
Max torque	277 lbf-ft/1800 rpm
Pumps	Double variable piston pump and gear pump
System flow	2 x 33.3 g/min
Max system psi	4554 psi
Max digging psi	4771 psi
<b>Swing Speed</b>	
Max swing speed	13.0/min
Travel speed high/low	3.6/2.1 mph
Gradeability	35°
Max drawbar pull	24,728 lbs
<b>Digging Force</b>	
Arm digging force *at high power	15,512 lbs 16,186 lbs
Bucket digging force * at high power	21,132 lbs 22,031 lbs
<b>Service Data</b>	
Fuel tank	73 gal
Cooling system	5.5 gal
Engine oil	5.17 gal
DEF tank capacity	14.5 gal
Hydraulic oil tank	41.7 gal
Operating weight	28,429 lbs
Ground Pressure	5.94 psi



**KATO**

**EXCAVATORS AND TRACK LOADERS**

[www.isequipmentkc.com](http://www.isequipmentkc.com)

16400 East Kentucky Rd.  
Independence, Mo 64058  
(816) 429-1600